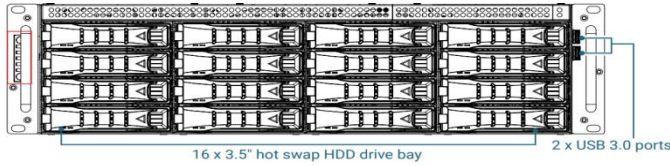




Front Panel View

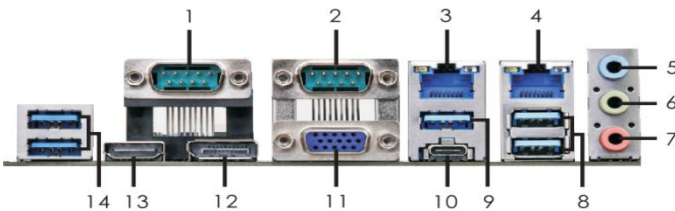


Item	Description	Item	Description
	Power Button		System Alert LED
	Power Status LED		System Reset Button
	Drive Activity LED		USB 3.0 Type A port
	LAN Activity LED		

Hard Drive Location Description

MegaRaid card			
1	2	3	4
5	6	7	8
9	10	11	12
13	14	15	16

I/O Panel

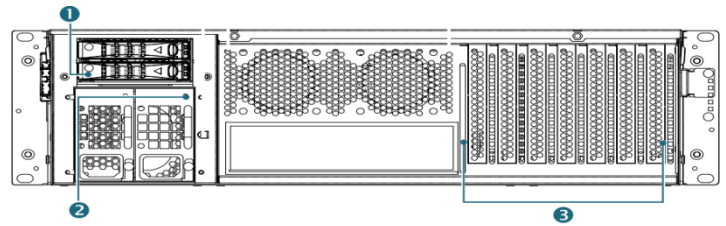


- ① COM Port (COM1) (RS232/422/485)
- ② COM Port (COM2) (RS232/422/485)
- ③ RJ-45 Gigabit Ethernet Interface 2**
- ④ RJ-45 Gigabit Ethernet Interface 1**
- ⑤ Audio Input (Light Blue)
- ⑥ Audio Output (Green)
- ⑦ Microphone (Pink)
- ⑧ USB 3.2 Gen2 Ports (USB3_3_4)
- ⑨ USB 3.2 Gen2 Ports (USB3_3_9)
- ⑩ USB 3.2 Gen2 Type-C Ports (TC_U7_8)
- 11 D-Sub Port (VGA1)
- 12 DisplayPort (DP1)
- 13 HDMI Port (HDMI1)
- 14 USB 3.2 Gen2 Ports (USB3_1_2)
- 15 Dedicated Graphics Card Output: DisplayPort, HDMI, DVI-D or DVI-I (Depending on the actual graphics card output)

Features:

- 72 and 108 channels 1080P/3M/4M/5M/8M/12M Network streaming, recording
- built-in 1 x 500GB 2.5 Inch SATA SSD (OS)
- Support failover up to 36 channel per server and up to 8 hosts for backup
- Dual streaming mode supported
- 1 monitor support up to 36 channels in total
- Support Fisheye camera dewarping
- Built-in dual port 2.5GbE Ethernet, RJ-45 x 2
- Front panel with 2 x USB 3.0 Ports
- Built-in 800W 1+1 redundant PSU
- Standard 3U dimension

Rear Panel View



Item	Description
1	Option 1: 6 x 2.5" internal Option 2: 2 x 2.5" hot swap + 4 x 2.5" internal drive Option 3: 4 x 2.5" internal + 1 x Slim DVD-ROM Option 4: 2 x 2.5" hot swap + 2 x 2.5" internal drive + 1 x Slim DVD-ROM
2	800W 1+1 redundant PSU PMBus 1.2 80+ Platinum
3	7 x PCIe slots

Caution

- Do not drop or strike the equipment
- Do not install the equipment near naked flames or heat sources
- Do not expose this unit to rain, moisture, smoke or dusty environments
- Do not cover the opening of the unit with cloth or plastic or install this unit in a poorly-ventilated place. Allow 10 cm between this unit and its surroundings!
- Do not continue to operate the unit under abnormal conditions such as detection of smoke, strange smell, or malfunctioned screen whilst power is turned on
- Do not touch the power connection with wet hands
- Do not damage the power cord or leave it under pressure
- To avoid unnecessary magnetic interference, do not operate this unit near magnets, speaker system, etc.
- All connection cables must be grounded properly

Server Room Guidelines

Generally, the server room should maintain a temperature of 24 ± 4 degrees and a humidity level of 50 ± 20%. Excessive temperature and humidity can easily lead to corrosion of parts, reduced lifespan and equipment failures. Dust should be cleaned regularly to reduce the risk of overheating. Please ensure that these assets are not

Start using the NAV Recorder

Details about NAV operation, please scan the QR code enclosed with the package to get the operation manual.

CAUTION

Risk of explosion if battery is replaced with an incorrect type.
Dispose of used batteries according to the instructions.

Disclaimer

All the information, trademarks, logos, graphics, and other items ("Information") mentioned in this manual are provided for reference purposes only and are subject to change without prior notice. While we make every effort to ensure the accuracy of the information in this manual, we do not provide any express or implied warranties regarding the accuracy of the information. We are not responsible for any errors or omissions.



Hard Drive Installation Instruction

- ① Press the tray control lever release button and release the lever
- ② Pull the lever outward and completely remove the tray out of the chassis



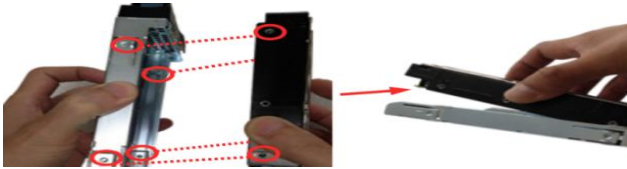
- ③ Push the hard drive out from the back of the hard drive tray



- ④ Carefully remove the hard drive



- ⑤ To install the HDD, align the new hard drive with the notch on the tray and insert the new hard drive into the tray. And to remove the HDD, pull up to remove the hard drive from the hard drive tray. Make sure the hard drive was not damaged during installation or removal.



- ⑥ Insert the hard drive tray into the chassis. Ensure that the tray's edges are aligned and when pushed into the correct secure position, push the tray lever until it reaches the end and makes a clicking sound.



Hard Drive Selection for Video Recording

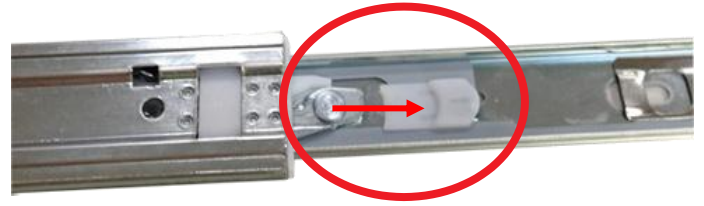
In the manual, it is recommended to use CMR hard drives when constant read/write operations or important data transfers are crucial for the video recording system. CMR hard drives are usually the better choice. It is advised to select from the NAS Pro or Enterprise series within the same model line, as they are designed to withstand long-term read/write operations and offer extended lifespan and warranty support.



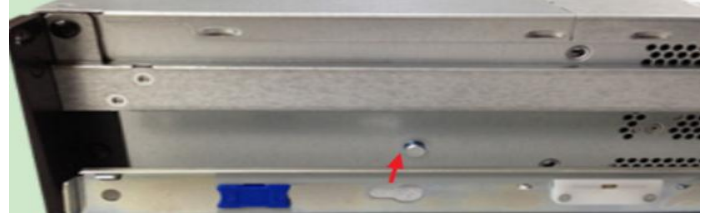
Brand	Model#	Format	Application	HDD Bay
WD	Red Pro NAS	CMR	NAS RAID small and medium-scale video recording	16
WD	Ultrastar DC HC530	CMR	NAS or Database medium scale video recording	16
WD	Gold Enterprise	CMR	High-volume channel streaming recording, JBOD	16
Seagate	IronWolf Pro NAS	CMR	NAS or Database medium scale video recording	16
Seagate	Enterprise Exos 7e8	CMR	Database and high-volume channel streaming recording	16
Seagate	Enterprise Exos X16	CMR	High-volume channel streaming recording, JBOD	16

Slide Rail Installation Guideline

- ① Release and remove the inner rail from the slide assembly.



- ② Connect the inner rail to the system host.



- ③ Slide and lock the inner rail.



- ④ Ensure that the spring is securely locked.

- ⑤ Reserved screw holes.



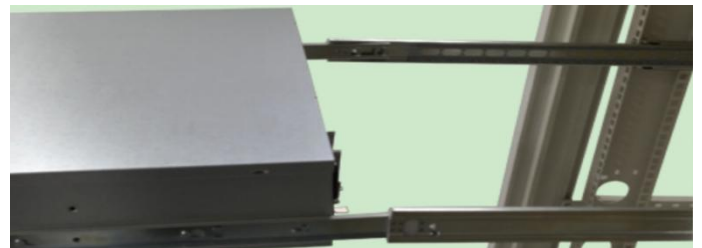
- ⑥ Align the holes, push forward to position, and lock in place.



- ⑦ Ensure that the ball bearing retainer is locked forward.

- ⑧ Pull out the middle navigation until it is locked.

- ⑨ Slide the release latch and push the system into the rack to complete the installation.



Caution

The unit may tilt or fall due to improper installation or placement on uneven surface. The system must be placed on a flat surface before starting installation and maintenance.